

Coil Pipe Syphons

■ Features

- Prevent damage caused by high temperature direct affect on the pressure gauge
- Applications
 - pressure measurement of high temperature steam



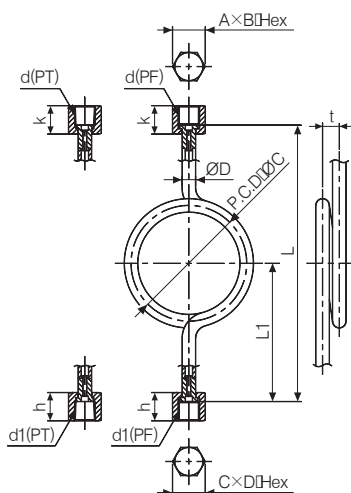
■ Specifications

Series		SS-CS	
Material		Steel	Stainless Steel
	Connector (Joint-Outlet)	SS400(Ni-plating)	SUS316
	Connector (Joint-Intlet)	SS400(Ni-plating)	SUS316
	Pipe	STPG38(Ni-plating)	SUS316TP
	Nipple-Pipe	SS400(Ni-plating)	SUS316
Type		<ul style="list-style-type: none"> • Female x Female • Female x Male • Male x Male • Female x Flange • Male x Flange • Flange x Flange 	

※ Cooling effect : Depends on status of pipe like diameter, length, thickness, temperature, and etc.

■ Dimensions

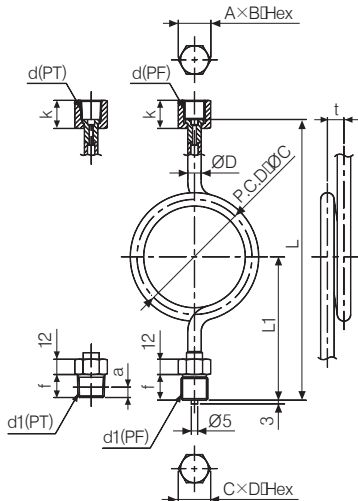
(unit:mm)



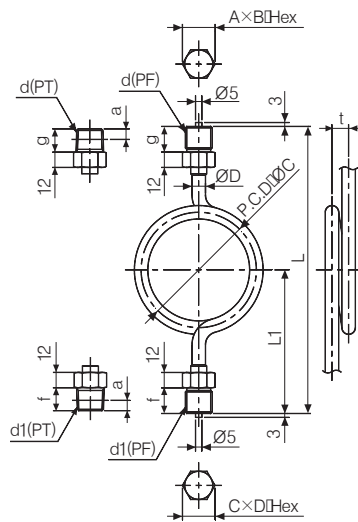
Model	Connector (d)	Connector (d1)	A×B Hex	C×D Hex	k	h	ØD	ØC	t	L1	L
SS-CS01 (F)×(F)	PF(PT)1/4	PF(PT)1/4	19×21.9	19×21.9	20	20	10.5	90	13	110	215
	PF(PT)1/4	PF(PT)3/8		22×25.4	20	22					
	PF(PT)1/4	PF(PT)1/2		27×31.1	20	24					
	PF(PT)3/8	PF(PT)1/4	22×25.4	19×21.9	22	20	10.5	90	13		
	PF(PT)3/8	PF(PT)3/8		22×25.4	22	22					
	PF(PT)3/8	PF(PT)1/2		27×31.1	22	24					
	PF(PT)1/2	PF(PT)1/4	27×31.1	19×21.9	24	20	10.5	90	13		
	PF(PT)1/2	PF(PT)3/8		22×25.4	24	22	10.5	90	13		
							17.3	115	20		
	PF(PT)1/2	PF(PT)1/2		27×31.1	24	24	10.5	90	13		
			17.3				115	20			
					21.7	120	25				

Coil Pipe Syphons

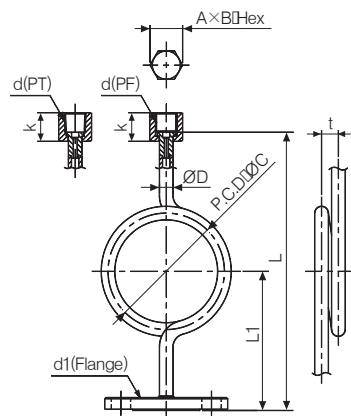
(unit:mm)



Model	Connector (d)	Connector (d1)	A×B Hex	C×D Hex	k	h	ØD	ØC	t	L1	L
SS-CS02 (F)×(M)	PF(PT)1/4	PF(PT)1/4	19×21.9	17×21.9	20	16	10.5	90	13	108	213
	PF(PT)1/4	PF(PT)3/8		19×21.9	20	18				110	215
	PF(PT)1/4	PF(PT)1/2		22×25.4	20	20				112	217
	PF(PT)3/8	PF(PT)1/4	22×25.4	22×25.4	22	16	10.5	90	13	108	213
	PF(PT)3/8	PF(PT)3/8			22	18				110	215
	PF(PT)3/8	PF(PT)1/2			22	20				112	217
	PF(PT)1/2	PF(PT)1/4	27×31.1	27×31.1	24	16	10.5	90	13	108	213
	PF(PT)1/2	PF(PT)3/8			20	18				110	215
	PF(PT)1/2	PF(PT)1/2			24	20				112	217



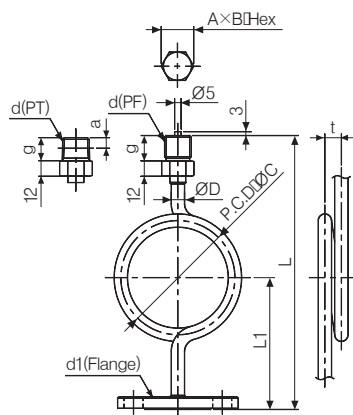
Model	Connector (d)	Connector (d1)	A×B Hex	C×D Hex	k	h	ØD	ØC	t	L1	L
SS-CS03 (M)×(M)	PF(PT)1/4	PF(PT)1/4	19×21.9	17×19.6	16	16	10.5	90	13	108	216
	PF(PT)1/4	PF(PT)3/8		19×21.9	18	18				110	220
	PF(PT)1/4	PF(PT)1/2		22×25.4	20	20				112	224
	PF(PT)3/8	PF(PT)1/4	22×25.4	22×25.4	16	16	10.5	90	13	108	216
	PF(PT)3/8	PF(PT)3/8			18	18				110	220
	PF(PT)3/8	PF(PT)1/2			20	20				112	224
	PF(PT)1/2	PF(PT)1/4	27×31.1	27×31.1	16	16	10.5	90	13	108	216
	PF(PT)1/2	PF(PT)3/8			18	18				110	220
	PF(PT)1/2	PF(PT)1/2			20	20				112	224



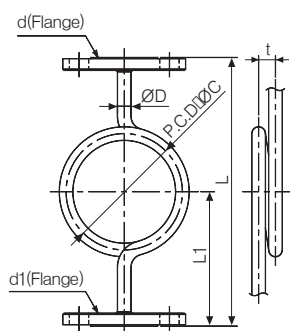
Model	Connector (d)	Connector (d1)	A×B Hex	k	ØD	ØC	t	L1	L
SS-CS04 (F)×Flange	PF(PT)1/4	JIS 10K	19×21.9	20	10.5	90	13	110	215
	PF(PT)1/4								
	PF(PT)1/4								
	PF(PT)3/8	JIS 20K	22×25.4	22	10.5	90	13		
	PF(PT)3/8								
	PF(PT)3/8								
	PF(PT)3/8	ANSI #150	27×31.1	24	10.5	90	13		
	PF(PT)1/2								
	PF(PT)1/2								
PF(PT)1/2	ANSI #300	27×31.1	24	17.3	115	20			
PF(PT)1/2							21.7	120	25

SS-CS Series

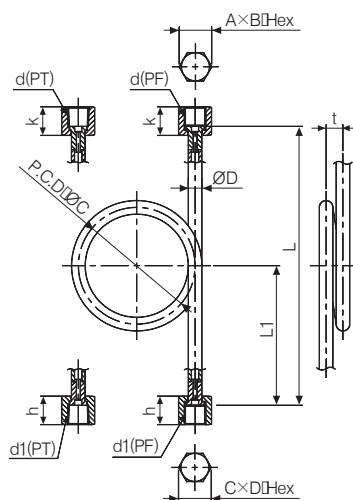
(unit:mm)



Model	Connector (d)	Connector (d1)	A×B Hex	k	ØD	ØC	t	L1	L
SS-CS05 (M)×Flange	PF(PT)1/4	JIS 10K	19×21.9	16	10.5	90	13	110	215
	PF(PT)1/4								
	PF(PT)1/4								
	PF(PT)3/8	JIS 20K	22×25.4	18	10.5	90	13		
	PF(PT)3/8								
	PF(PT)3/8	ANSI #150	22×25.4	18	17.3	115	20		
	PF(PT)1/2								
	PF(PT)1/2	ANSI #300	27×31.1	20	10.5	90	13		
	PF(PT)1/2				17.3	115	20		
PF(PT)1/2				21.7	120	25			



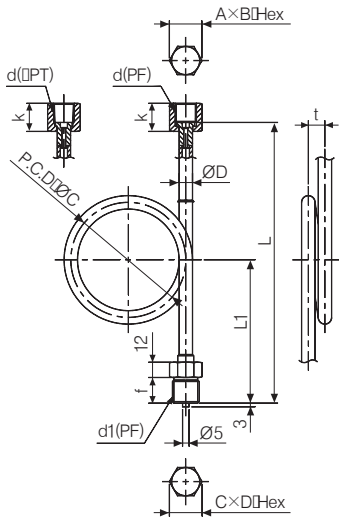
Model	Connector (d)	Connector (d1)	ØD	ØC	t	L1	L
SS-CS06 Flange×Flange	JIS 10K	JIS 10K	10.5	90	13	110	215
	JIS 20K	JIS 20K	17.3	115	20		
	ANSI #150	ANSI #150	21.7	120	25		
	ANSI #300	ANSI #300					



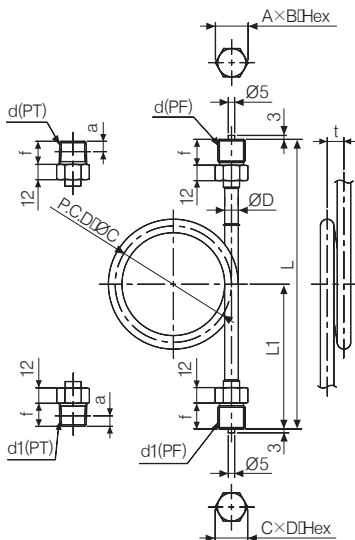
Model	Connector (d)	Connector (d1)	A×B Hex	C×D Hex	k	h	ØD	ØC	t	L1	L
SS-CS07 (F)×(F)	PF(PT)1/4	PF(PT)1/4	19×21.9	19×21.9	20	20	10.5	90	13	110	215
	PF(PT)1/4	PF(PT)3/8		22×25.4	20	22					
	PF(PT)1/4	PF(PT)1/2		27×31.1	20	24					
	PF(PT)3/8	PF(PT)1/4	22×25.4	19×21.9	22	20	10.5	90	13		
	PF(PT)3/8	PF(PT)3/8		22×25.4	22	22					
	PF(PT)3/8	PF(PT)1/2		27×31.1	22	24					
	PF(PT)1/2	PF(PT)1/4	27×31.1	19×21.9	24	20	10.5	90	13		
	PF(PT)1/2	PF(PT)3/8		22×25.4	24	22	10.5	90	13		
							17.3	115	20		
	PF(PT)1/2	PF(PT)1/2		27×31.1	24	24	10.5	90	13		
							17.3	115	20		
	PF(PT)1/2	PF(PT)1/2		27×31.1	24	24	21.7	120	25		

Coil Pipe Syphons

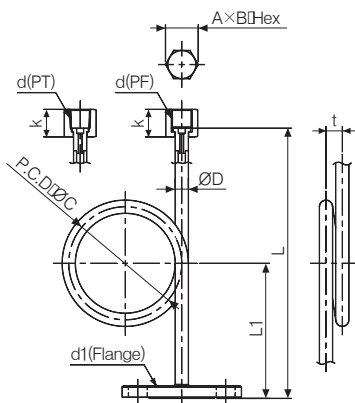
(unit:mm)



Model	Connector (d)	Connector (d1)	A×B Hex	C×D Hex	k	h	ØD	ØC	t	L1	L
SS-CS08 (F)×(M)	PF(PT)1/4	PF(PT)1/4	19×21.9	17×21.9	20	16	10.5	90	13	108	213
	PF(PT)1/4	PF(PT)3/8		19×21.9	20	18				110	215
	PF(PT)1/4	PF(PT)1/2		22×25.4	20	20				112	217
	PF(PT)3/8	PF(PT)1/4	22×25.4	22×25.4	22	16	10.5	90	13	108	213
	PF(PT)3/8	PF(PT)3/8			22	18				110	215
	PF(PT)3/8	PF(PT)1/2			22	20				112	217
	PF(PT)1/2	PF(PT)1/4	27×31.1	27×31.1	24	16	10.5	90	13	108	213
	PF(PT)1/2	PF(PT)3/8			24	18				110	215
	PF(PT)1/2	PF(PT)1/2			24	20				112	217



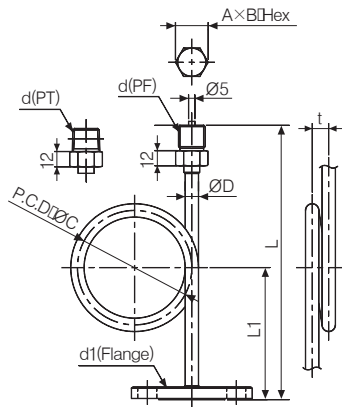
Model	Connector (d)	Connector (d1)	A×B Hex	C×D Hex	k	h	ØD	ØC	t	L1	L
SS-CS09 (M)×(M)	PF(PT)1/4	PF(PT)1/4	19×21.9	17×19.6	16	16	10.5	90	13	108	216
	PF(PT)1/4	PF(PT)3/8		19×21.9	18	18				110	220
	PF(PT)1/4	PF(PT)1/2		22×25.4	20	20				112	224
	PF(PT)3/8	PF(PT)1/4	22×25.4	22×25.4	16	16	10.5	90	13	108	216
	PF(PT)3/8	PF(PT)3/8			18	18				110	220
	PF(PT)3/8	PF(PT)1/2			20	20				112	224
	PF(PT)1/2	PF(PT)1/4	27×31.1	27×31.1	16	16	10.5	90	13	108	216
	PF(PT)1/2	PF(PT)3/8			18	18				110	220
	PF(PT)1/2	PF(PT)1/2			20	20				112	224



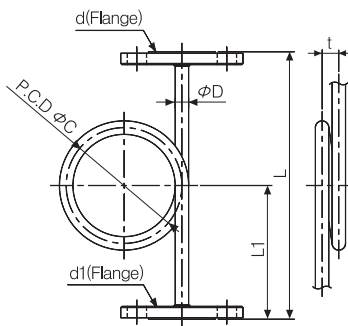
Model	Connector (d)	Connector (d1)	A×B Hex	k	ØD	ØC	t	L1	L
SS-CS10 (F)×Flange	PF(PT)1/4	JIS 10K	19×21.9	20	10.5	90	13	110	215
	PF(PT)1/4								
	PF(PT)1/4								
	PF(PT)3/8	JIS 20K	22	10.5	90	13			
	PF(PT)3/8			ANSI #150	17.3	115	20		
	PF(PT)3/8	ANSI #300	10.5		90	13			
	PF(PT)1/2		27×31.1		24	17.3	115		
	PF(PT)1/2			21.7		120	25		

SS-CS Series

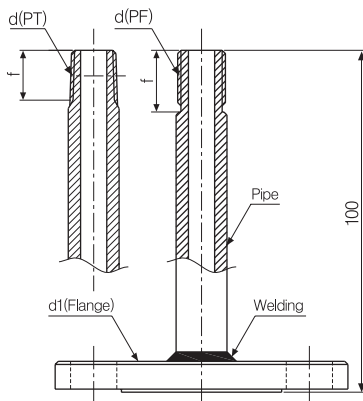
(unit:mm)



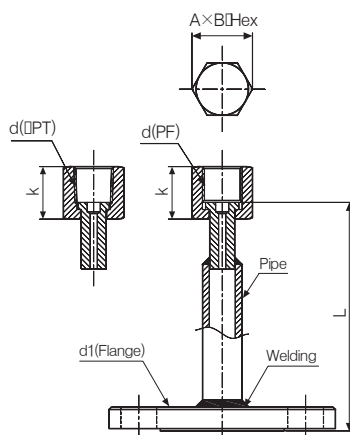
Model	Connector (d)	Connector (d1)	A×B Hex	k	ØD	ØC	t	L1	L
SS-CS11 (M)×Flange	PF(PT)1/4	JIS 10K	19×21.9	16	10.5	90	13	110	215
	PF(PT)1/4								
	PF(PT)1/4								
	PF(PT)3/8	JIS 20K	22×25.4	18	10.5	90	13		
	PF(PT)3/8								
	PF(PT)3/8	ANSI #150	27×31.1	20	17.3	115	20		
	PF(PT)1/2								
	PF(PT)1/2	ANSI #300	27×31.1	20	17.3	115	20		
	PF(PT)1/2								



Model	Connector (d)	Connector (d1)	ØD	Ø C	t	L1	L
SS-CS12 Flange×Flange	JIS 10K	JIS 10K	10.5	90	13	110	215
	JIS 20K	JIS 20K	17.3	115	20		
	ANSI #150	ANSI #150					
	ANSI #300	ANSI #300	21.7	120	25		



Model	Connector (d)	Connector (d1)	f
SS-IS01 (F)	PF3/8	JIS 10K	18
	PT3/8	JIS 20K	16
	PF1/2	ANSI #150	20
	PT1/2	ANSI #300	18

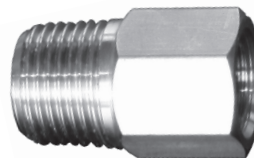


Model	Connector (d)	Connector (d1)	A×B Hex	k	L
SS-IS02 (M)	PF3/8	JIS 10K	22×25.4	22	98
	PT3/8	JIS 20K		22	96
	PF1/2	ANSI #150	27×31.1	24	100
	PT1/2	ANSI #300		24	98

Snubbers

■ Features

- Use as filter and buffer with ventilatable metal disk
- Suppress the effects of pulsating pressure
 - Less blockage than orifice mounting type
- Filters for tetrachloride, benzene, naphtha, etc.
- Applications
 - Filters for water, oil, etc.
 - Recycle industrial wastewater

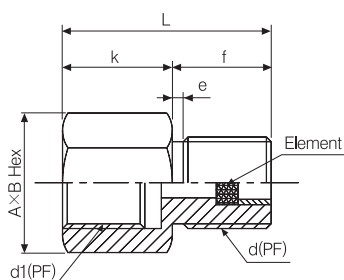


■ Specifications

Series		SS-SB	
Material		Brass	Stainless steel
	Body	YBSC	SUS316
	Stopper	BSBM	SUS316
	Packing(Gasket-Outlet)	CuB	SUS316
	Connector(Joint-Inlet)	SS400(Ni-plating)	SUS316
	Washer	SUS304	SUS304
	Packing(Gasket-Inlet)	Valqua 1500	Valqua 1500
	Ring	SUS304	SUS304
	Nut	SS400(Ni-plating)	SS400(Ni-plating)
Type		<ul style="list-style-type: none"> • PF(Male) x PF(Male) • PF(Male) x PT(Female) • PT(Female) x PF(Male) • PT(Female) x PT(Female) 	

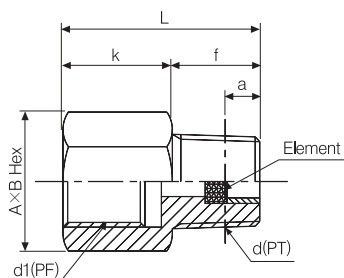
■ Dimensions

(unit:mm)

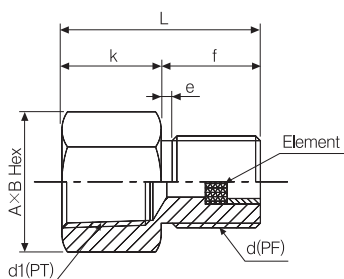


Model	Connector (d1)	Connector (d)	A×B Hex	k	f	L	e
SS-SB01 (PF)×(PF)	PF1/4	PF1/4	19×21.9	18	16	34	2
	PF1/4	PF3/8	19×21.9	18	18	36	2
	PF1/4	PF1/2	22×25.4	18	20	38	2
	PF3/8	PF1/4	22×25.4	20	16	36	2
	PF3/8	PF3/8	22×25.4	20	18	38	2
	PF3/8	PF1/2	22×25.4	20	20	40	2
	PF1/2	PF1/4	27×31.1	22	16	38	2
	PF1/2	PF3/8	27×31.1	22	18	40	2
	PF1/2	PF1/2	27×31.1	22	20	42	2

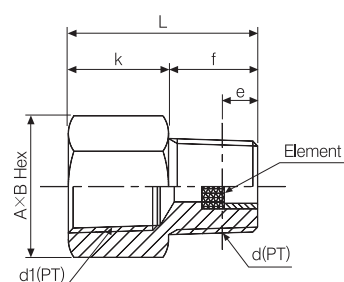
(unit:mm)



Model	Connector (d1)	Connector (d)	A×B Hex	k	f	L	a
SS-SB02 (PT)×(PF)	PF1/4	PT1/4	19×21.9	18	14	32	6.01
	PF1/4	PT3/8	19×21.9	18	16	34	6.35
	PF1/4	PT1/2	22×25.4	18	18	36	8.16
	PF3/8	PT1/4	22×25.4	20	14	34	6.01
	PF3/8	PT3/8	22×25.4	20	16	36	6.35
	PF3/8	PT1/2	22×25.4	20	18	36	8.16
	PF1/2	PT1/4	27×31.1	22	14	36	6.01
	PF1/2	PT3/8	27×31.1	22	16	38	6.35
	PF1/2	PT1/2	27×31.1	22	18	40	8.16



Model	Connector (d1)	Connector (d)	A×B Hex	k	f	L	e
SS-SB03 (PF)×(PT)	PT1/4	PF1/4	19×21.9	16	16	32	2
	PT1/4	PF3/8	19×21.9	16	16	34	2
	PT1/4	PF1/2	22×25.4	16	16	36	2
	PT3/8	PF1/4	22×25.4	18	18	34	2
	PT3/8	PF3/8	22×25.4	18	18	36	2
	PT3/8	PF1/2	22×25.4	18	18	38	2
	PT1/2	PF1/4	27×31.1	20	20	36	2
	PT1/2	PF3/8	27×31.1	20	20	38	2
	PT1/2	PF1/2	27×31.1	20	20	40	2

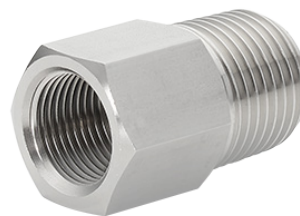


Model	Connector (d1)	Connector (d)	A×B Hex	k	f	L	e
SS-SB04 (PT)×(PF)	PT1/4	PT1/4	19×21.9	16	14	30	6.01
	PT1/4	PT3/8	19×21.9	16	16	32	6.35
	PT1/4	PT1/2	22×25.4	16	18	34	8.16
	PT3/8	PT1/4	22×25.4	18	14	32	6.01
	PT3/8	PT3/8	22×25.4	18	16	34	6.35
	PT3/8	PT1/2	22×25.4	18	18	36	8.16
	PT1/2	PT1/4	27×31.1	20	14	34	6.01
	PT1/2	PT3/8	27×31.1	20	16	36	6.35
	PT1/2	PT1/2	27×31.1	20	18	38	8.16

Adapters

■ Features

- Used to connect different types or diameters of screws or pipes
- Variable specifications for sizes and applications
- Applications
 - Connecting different types or diameters of screws or pipes
 - Mounting a pressure gauge on a panel
 - Connecting pressure pipes

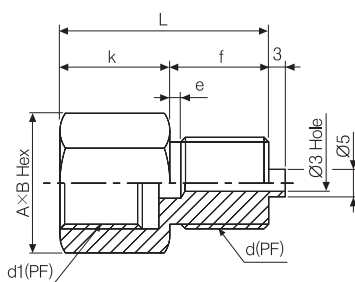


■ Specifications

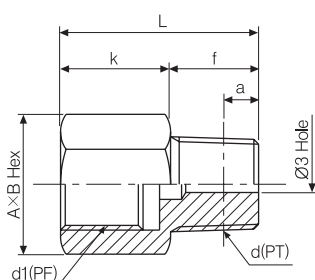
Series		SS-AD	
Material		Brass	Stainless steel
	Body	BSBM	SUS316
	Packing (Gasket-Outlet)	Teflon	Teflon
	Washer	BSBM	SUS316
Type		<ul style="list-style-type: none"> • PF(Male) x PF(Male) • PF(Male) x PT(Female) • PT(Female) x PF(Male) • PT(Female) x PT(Female) 	

■ Dimensions

(unit:mm)

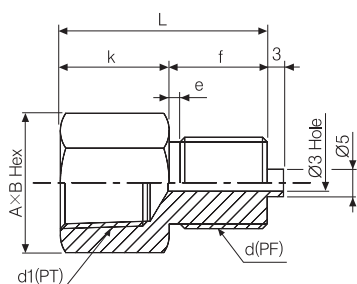


Model	Connector (d1)	Connector (d)	A×B Hex	k	f	L	e
SS-AD01 (PF)×(PF)	PF1/4	PF1/4	19×21.9	18	16	34	2
	PF1/4	PF3/8	19×21.9	18	18	36	2
	PF1/4	PF1/2	22×25.4	18	20	38	2
	PF3/8	PF1/4	22×25.4	20	16	36	2
	PF3/8	PF3/8	22×25.4	20	18	38	2
	PF3/8	PF1/2	22×25.4	20	20	40	2
	PF1/2	PF1/4	27×31.1	22	16	38	2
	PF1/2	PF3/8	27×31.1	22	18	40	2
	PF1/2	PF1/2	27×31.1	22	20	42	2

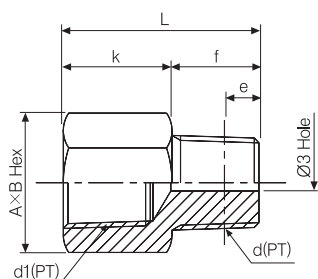


Model	Connector (d1)	Connector (d)	A×B Hex	k	f	L	a
SS-AD02 (PF)×(PT)	PF1/4	PT1/4	19×21.9	18	14	32	6.01
	PF1/4	PT3/8	19×21.9	18	16	34	6.35
	PF1/4	PT1/2	22×25.4	18	18	36	8.16
	PF3/8	PT1/4	22×25.4	20	14	34	6.01
	PF3/8	PT3/8	22×25.4	20	16	36	6.35
	PF3/8	PT1/2	22×25.4	20	18	36	8.16
	PF1/2	PT1/4	27×31.1	22	14	36	6.01
	PF1/2	PT3/8	27×31.1	22	16	38	6.35
	PF1/2	PT1/2	27×31.1	22	18	40	8.16

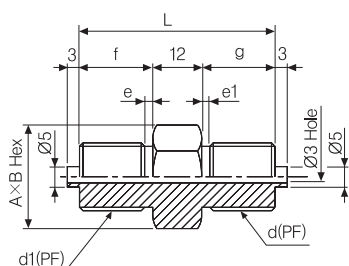
(unit:mm)



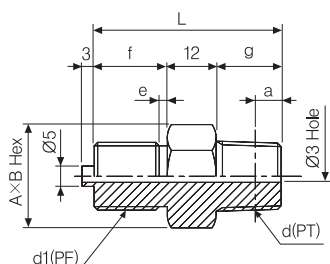
Model	Connector (d1)	Connector (d)	A×B Hex	k	f	L	e
SS-AD03 (PT)×(PF)	PT1/4	PF1/4	19×21.9	16	16	32	2
	PT1/4	PF3/8	19×21.9	16	18	34	2
	PT1/4	PF1/2	22×25.4	16	20	36	2
	PT3/8	PF1/4	22×25.4	18	16	34	2
	PT3/8	PF3/8	22×25.4	18	18	36	2
	PT3/8	PF1/2	22×25.4	18	20	38	2
	PT1/2	PF1/4	27×31.1	20	16	36	2
	PT1/2	PF3/8	27×31.1	20	18	38	2
	PT1/2	PF1/2	27×31.1	20	20	40	2



Model	Connector (d1)	Connector (d)	A×B Hex	k	f	L	e
SS-AD04 (PT)×(PT)	PT1/4	PT1/4	19×21.9	16	14	30	6.01
	PT1/4	PT3/8	19×21.9	16	16	32	6.35
	PT1/4	PT1/2	22×25.4	16	18	34	8.16
	PT3/8	PT1/4	22×25.4	18	14	32	6.01
	PT3/8	PT3/8	22×25.4	18	16	34	6.35
	PT3/8	PT1/2	22×25.4	18	18	36	8.16
	PT1/2	PT1/4	27×31.1	20	14	34	6.01
	PT1/2	PT3/8	27×31.1	20	16	36	6.35
	PT1/2	PT1/2	27×31.1	20	18	38	8.16



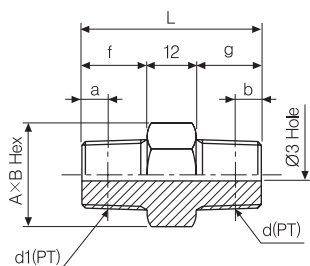
Model	Connector (d1)	Connector (d)	A×B Hex	f	g	L	e	e1
SS-AD05 (PF)×(PF)	PF1/4	PF1/4	19×21.9	16	16	44	2	2
	PF1/4	PF3/8	19×21.9	16	18	46	2	2
	PF1/4	PF1/2	22×25.4	16	20	48	2	2
	PF3/8	PF1/4	19×21.9	18	16	46	2	2
	PF3/8	PF3/8	19×21.9	18	18	48	2	2
	PF3/8	PF1/2	22×25.4	18	20	50	2	2
	PF1/2	PF1/4	22×25.4	20	16	48	2	2
	PF1/2	PF3/8	22×25.4	20	18	50	2	2
	PF1/2	PF1/2	22×25.4	20	20	52	2	2



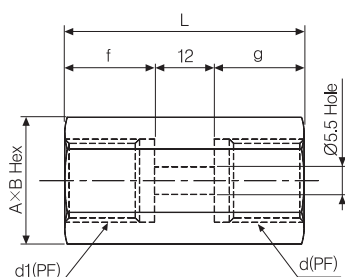
Model	Connector (d1)	Connector (d)	A×B Hex	f	g	L	e	a
SS-AD06 (PF)×(PT)	PF1/4	PT1/4	19×21.9	16	14	42	2	6.01
	PF1/4	PT3/8	19×21.9	16	16	44	2	6.35
	PF1/4	PT1/2	22×25.4	16	18	46	2	8.16
	PF3/8	PT1/4	19×21.9	18	14	44	2	6.01
	PF3/8	PT3/8	19×21.9	18	16	46	2	6.35
	PF3/8	PT1/2	22×25.4	18	18	48	2	8.16
	PF1/2	PT1/4	22×25.4	20	14	46	2	6.01
	PF1/2	PT3/8	22×25.4	20	16	48	2	6.35
	PF1/2	PT1/2	22×25.4	20	18	50	2	8.16

SS-AD Series

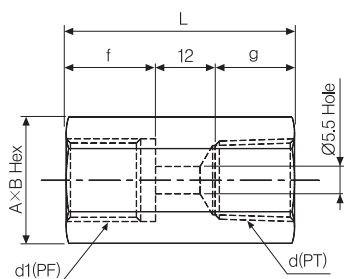
(unit:mm)



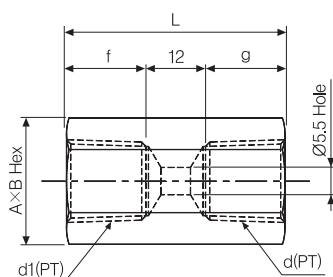
Model	Connector (d1)	Connector (d)	A×B Hex	f	g	L	a	b
SS-AD07 (PT)×(PT)	PT1/4	PT1/4	19×21.9	16	14	30	6.01	6.01
	PT1/4	PT3/8	19×21.9	16	16	32	6.35	6.35
	PT1/4	PT1/2	22×25.4	16	18	34	8.16	8.16
	PT3/8	PT1/4	19×21.9	18	14	32	6.01	6.01
	PT3/8	PT3/8	19×21.9	18	16	34	6.35	6.35
	PT3/8	PT1/2	22×25.4	18	18	36	8.16	8.16
	PT1/2	PT1/4	22×25.4	20	14	34	6.01	6.01
	PT1/2	PT3/8	22×25.4	20	16	36	6.35	6.35
	PT1/2	PT1/2	22×25.4	20	18	38	8.16	8.16



Model	Connector (d1)	Connector (d)	A×B Hex	f	g	L
SS-AD08 (PF)×(PF)	PF1/4	PF1/4	19×21.9	16	16	44
	PF1/4	PF3/8	22×25.4	16	18	46
	PF1/4	PF1/2	27×31.1	16	20	48
	PF3/8	PF1/4	22×25.4	18	16	46
	PF3/8	PF3/8	22×25.4	18	18	48
	PF3/8	PF1/2	27×31.1	18	20	50
	PF1/2	PF1/4	27×31.1	20	16	48
	PF1/2	PF3/8	27×31.1	20	18	50
	PF1/2	PF1/2	27×31.1	20	20	52



Model	Connector (d1)	Connector (d)	A×B Hex	f	g	L
SS-AD09 (PF)×(PT)	PF1/4	PT1/4	19×21.9	16	14	42
	PF1/4	PT3/8	22×25.4	16	16	44
	PF1/4	PT1/2	27×31.1	16	18	46
	PF3/8	PT1/4	22×25.4	18	14	44
	PF3/8	PT3/8	22×25.4	18	16	46
	PF3/8	PT1/2	27×31.1	18	18	48
	PF1/2	PT1/4	27×31.1	20	14	46
	PF1/2	PT3/8	27×31.1	20	16	48
	PF1/2	PT1/2	27×31.1	20	18	50



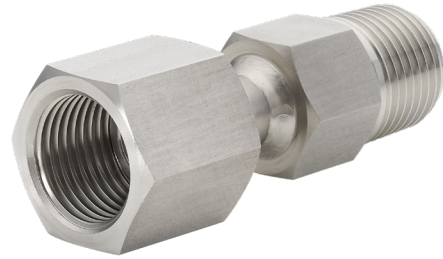
Model	Connector (d1)	Connector (d)	A×B Hex	f	g	L
SS-AD10 (PT)×(PT)	PF1/4	PT1/4	19×21.9	16	14	30
	PF1/4	PT3/8	22×25.4	16	16	32
	PF1/4	PT1/2	27×31.1	16	18	34
	PF3/8	PT1/4	22×25.4	18	14	32
	PF3/8	PT3/8	22×25.4	18	16	34
	PF3/8	PT1/2	27×31.1	18	18	36
	PF1/2	PT1/4	27×31.1	20	14	34
	PF1/2	PT3/8	27×31.1	20	16	36
	PF1/2	PT1/2	27×31.1	20	18	38

MEMO

Gauge Unions

■ Features

- Used to connect different types or diameters of screws or pipes
- Variable specifications for sizes and applications
- Applications
 - Connecting different types or diameters of screws
 - Mounting a pressure gauge on a panel
 - Connecting pressure pipes

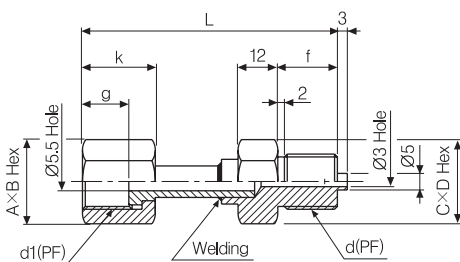


■ Specifications

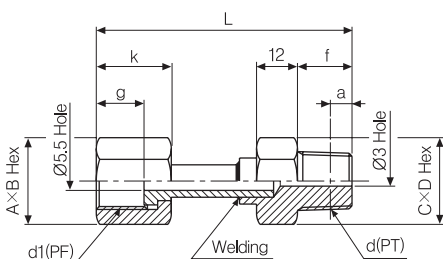
Series		SS-GU	
Material		Brass	Stainless steel
	Body	YBSC	SUS316
	Stopper	BSBM	SUS316
	Packing (Gasket-Outlet)	CuB	SUS316
	Connector	SS400(Ni-plating)	SUS316
	Washer	SUS304	SUS304
	Packing (Gasket-Inlet)	Valqua 1500	Valqua 1500
	Ring	SUS304	SUS304
	Nut	SS400(Ni-plating)	SS400(Ni-plating)
Type		<ul style="list-style-type: none"> • PF(Male) x PF(Male) • PF(Male) x PT(Female) • PT(Female) x PF(Male) • PT(Female) x PT(Female) 	

■ Dimensions

(unit:mm)



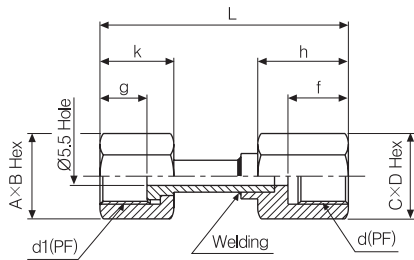
Model	Connector (d1)	Connector (d)	A×B Hex	C×D Hex	g	k	f	L
SS-GU01 (PF)×(PF)	PF3/8	PF1/4	22×25.4	19×21.9	14	22	16	75
	PF3/8	PF3/8	22×25.4	19×21.9	14	22	18	77
	PF3/8	PF1/2	22×25.4	22×25.4	14	22	20	79
	PF1/2	PF1/4	27×31.1	19×21.9	16	24	16	77
	PF1/2	PF3/8	27×31.1	19×21.9	16	24	18	79
	PF1/2	PF1/2	27×31.1	22×25.4	16	24	20	81



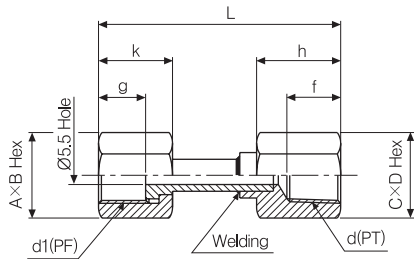
Model	Connector (d1)	Connector (d)	A×B Hex	C×D Hex	g	k	f	a	L
SS-GU02 (PF)×(PT)	PF3/8	PT1/4	22×25.4	19×21.9	14	22	14	6.01	73
	PF3/8	PT3/8	22×25.4	19×21.9	14	22	16	6.35	75
	PF3/8	PT1/2	22×25.4	22×25.4	14	22	18	8.16	77
	PF1/2	PT1/4	27×31.1	19×21.9	16	24	14	6.01	75
	PF1/2	PT3/8	27×31.1	19×21.9	16	24	16	6.35	77
	PF1/2	PT1/2	27×31.1	22×25.4	16	24	18	8.15	79

Gauge Unions

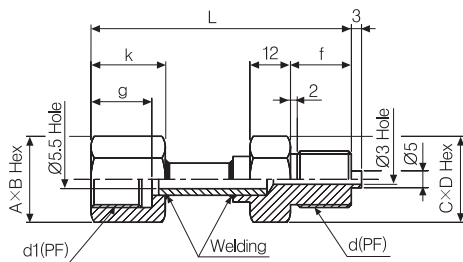
(unit:mm)



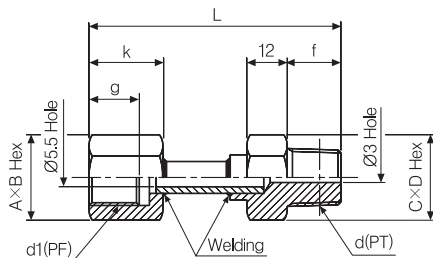
Model	Connector (d1)	Connector (d)	A×B Hex	C×D Hex	g	k	f	h	L
SS-GU03 (PF)×(PF)	PF3/8	PF1/4	22×25.4	19×21.9	14	22	16	25	74
	PF3/8	PF3/8	22×25.4	19×21.9	14	22	18	27	76
	PF3/8	PF1/2	22×25.4	22×25.4	14	22	20	29	78
	PF1/2	PF1/4	27×31.1	19×21.9	16	24	16	25	76
	PF1/2	PF3/8	27×31.1	19×21.9	16	24	18	27	78
	PF1/2	PF1/2	27×31.1	22×25.4	16	24	20	29	80



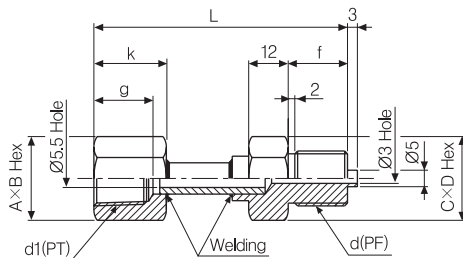
Model	Connector (d1)	Connector (d)	A×B Hex	C×D Hex	g	k	f	h	L
SS-GU04 (PF)×(PT)	PF3/8	PT1/4	22×25.4	19×21.9	14	22	14	23	72
	PF3/8	PT3/8	22×25.4	19×21.9	14	22	16	25	74
	PF3/8	PT1/2	22×25.4	22×25.4	14	22	18	27	76
	PF1/2	PT1/4	27×31.1	19×21.9	16	24	14	23	74
	PF1/2	PT3/8	27×31.1	19×21.9	16	24	16	25	76
	PF1/2	PT1/2	27×31.1	22×25.4	16	24	18	27	78



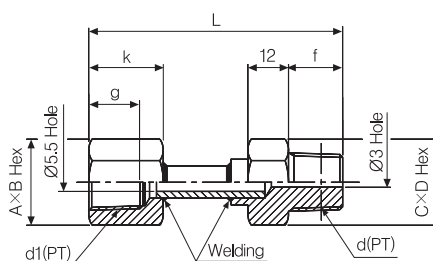
Model	Connector (d1)	Connector (d)	A×B Hex	C×D Hex	g	k	f	L
SS-GU05 (PF)×(PF)	PF3/8	PF1/4	22×25.4	19×21.9	18	22	16	75
	PF3/8	PF3/8	22×25.4	19×21.9	18	22	18	77
	PF3/8	PF1/2	22×25.4	22×25.4	18	22	20	79
	PF1/2	PF1/4	27×31.1	19×21.9	20	24	16	77
	PF1/2	PF3/8	27×31.1	19×21.9	20	24	18	79
	PF1/2	PF1/2	27×31.1	22×25.4	20	24	20	81



Model	Connector (d1)	Connector (d)	A×B Hex	C×D Hex	g	k	f	L
SS-GU06 (PF)×(PT)	PF3/8	PT1/4	22×25.4	19×21.9	18	22	14	73
	PF3/8	PT3/8	22×25.4	19×21.9	18	22	16	75
	PF3/8	PT1/2	22×25.4	22×25.4	18	22	18	77
	PF1/2	PT1/4	27×31.1	19×21.9	20	24	14	75
	PF1/2	PT3/8	27×31.1	19×21.9	20	24	16	77
	PF1/2	PT1/2	27×31.1	22×25.4	20	24	18	79



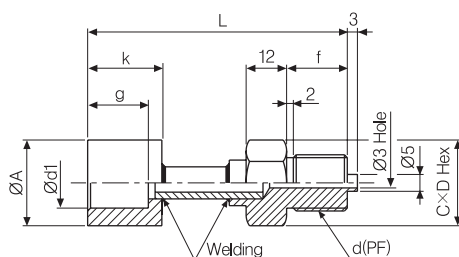
Model	Connector (d1)	Connector (d)	A×B Hex	C×D Hex	g	k	f	L
SS-GU07 (PT)×(PF)	PT3/8	PF1/4	22×25.4	19×21.9	16	22	14	75
	PT3/8	PF3/8	22×25.4	19×21.9	16	22	16	77
	PT3/8	PF1/2	22×25.4	22×25.4	16	22	18	79
	PT1/2	PF1/4	27×31.1	19×21.9	18	24	14	77
	PT1/2	PF3/8	27×31.1	19×21.9	18	24	16	79
	PT1/2	PF1/2	27×31.1	22×25.4	18	24	18	81



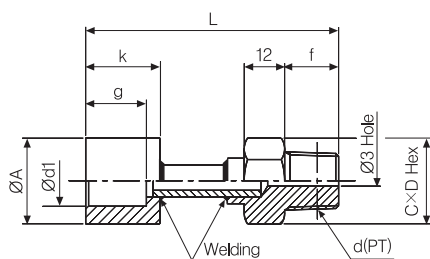
Model	Connector (d1)	Connector (d)	A×B Hex	C×D Hex	g	k	f	L
SS-GU08 (PT)×(PT)	PT3/8	PT1/4	22×25.4	19×21.9	16	22	14	73
	PT3/8	PT3/8	22×25.4	19×21.9	16	22	16	75
	PT3/8	PT1/2	22×25.4	22×25.4	16	22	18	77
	PT1/2	PT1/4	27×31.1	19×21.9	18	24	14	75
	PT1/2	PT3/8	27×31.1	19×21.9	18	24	16	77
	PT1/2	PT1/2	27×31.1	22×25.4	18	24	18	79

SS-GU Series

(unit:mm)

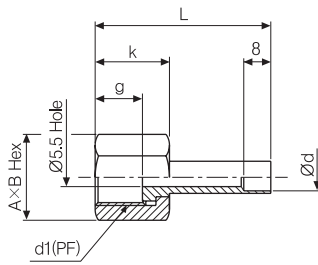


Model	Connector (d1)	Connector (d)	A×B Hex	g	k	f	L
SS-GU09 Pipe×(PF)	Ø6	PF1/4	19×21.9	8	15	16	53
	Ø6	PF3/8	19×21.9	8	15	18	55
	Ø6	PF1/2	22×25.4	8	15	20	57
	Ø8	PF1/4	19×21.9	8	15	16	53
	Ø8	PF3/8	19×21.9	8	15	18	55
	Ø8	PF1/2	22×25.4	8	15	20	57
	Ø10	PF1/4	19×21.9	8	18	16	53
	Ø10	PF3/8	19×21.9	8	18	18	55
	Ø10	PF1/2	22×25.4	8	18	20	57
	1/8B	PF1/4	19×21.9	8	18	16	53
	1/8B	PF3/8	19×21.9	8	18	18	55
	1/8B	PF1/2	22×25.4	8	18	20	57
	3/8B	PF1/4	19×21.9	10	21	16	55
	3/8B	PF3/8	19×21.9	10	21	18	57
	3/8B	PF1/2	22×25.4	10	21	20	59
	1/2B	PF1/4	19×21.9	10	21	16	55
	1/2B	PF3/8	19×21.9	10	21	18	57
	1/2B	PF1/2	22×25.4	10	21	20	59
	3/4B	PF1/4	19×21.9	13	24	16	58
	3/4B	PF3/8	19×21.9	13	24	18	60
	3/4B	PF1/2	22×25.4	13	24	20	62

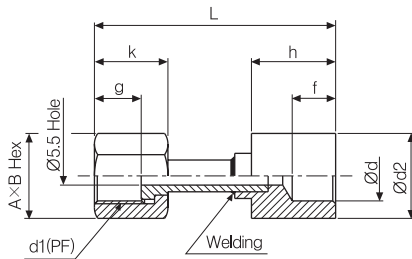


Model	Connector (d1)	Connector (d)	A×B Hex	g	k	f	L
SS-GU10 Pipe×(PT)	Ø6	PT1/4	19×21.9	8	15	14	51
	Ø6	PT3/8	19×21.9	8	15	16	53
	Ø6	PT1/2	22×25.4	8	15	18	55
	Ø8	PT1/4	19×21.9	8	15	14	51
	Ø8	PT3/8	19×21.9	8	15	16	53
	Ø8	PT1/2	22×25.4	8	15	18	55
	Ø10	PT1/4	19×21.9	8	18	14	51
	Ø10	PT3/8	19×21.9	8	18	16	53
	Ø10	PT1/2	22×25.4	8	18	18	55
	1/8B	PT1/4	19×21.9	8	18	14	51
	1/8B	PT3/8	19×21.9	8	18	16	53
	1/8B	PT1/2	22×25.4	8	18	18	55
	3/8B	PT1/4	19×21.9	10	21	14	53
	3/8B	PT3/8	19×21.9	10	21	16	55
	3/8B	PT1/2	22×25.4	10	21	18	57
	1/2B	PT1/4	19×21.9	10	21	14	53
	1/2B	PT3/8	19×21.9	10	21	16	55
	1/2B	PT1/2	22×25.4	10	21	18	57
	3/4B	PT1/4	19×21.9	13	24	14	56
	3/4B	PT3/8	19×21.9	13	24	16	58
	3/4B	PT1/2	22×25.4	13	24	18	60

(unit:mm)



Model	Connector (d1)	Connector (d)	A×B Hex	g	k	L
SS-GU11 (PF)×Pipe	PF3/8	Ø6	22×25.4	14	22	52
	PF3/8	Ø8	22×25.4	14	22	52
	PF3/8	Ø10	22×25.4	14	22	52
	PF3/8	1/8B	22×25.4	14	22	52
	PF1/2	Ø6	27×31.1	16	24	54
	PF1/2	Ø8	27×31.1	16	24	54
	PF1/2	Ø10	27×31.1	16	24	54
	PF1/2	1/8B	27×31.1	16	24	54

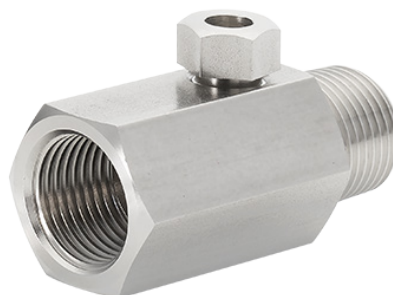


Model	Connector (d1)	Connector (d)	A×B Hex	Ød2	g	k	f	h	L
SS-GU12 (PF)×Pipe	PF3/8	3/8B	22×25.4	26	14	22	10	21	69
	PF3/8	1/2B	22×25.4	31.5	14	22	10	21	69
	PF3/8	3/4B	22×25.4	40	14	22	13	24	72
	PF1/2	3/8B	27×31.1	26	16	24	10	21	71
	PF1/2	1/2B	27×31.1	31.5	16	24	10	21	71
	PF1/2	3/4B	27×31.1	40	16	24	13	24	74

Dampener

■ Features

- Prevent damage to the instrument caused by pulsation
- Required to adjust pressure gauge indicator after installation
- Applications
 - Where pulsating pressure is applied
 - Where the no oil should enter
 - For overpressure and bubble removal
 - For outlet of pipes

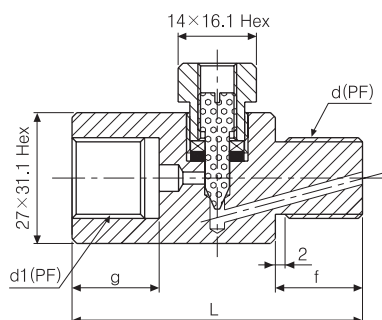


■ Specifications

Series		SS-DP	
Material		Brass	Stainless steel
	Body	BSBM	SUS316
	Needle valve	SUS316	SUS316
	Packing (Gasket-Outlet)	Teflon	Teflon
	Washer	BSBM	SUS316
	Fixing screw	SS400(Ni-plating)	SS400(Ni-plating)
Type		<ul style="list-style-type: none"> • PF(Male) x PF(Male) • PF(Male) x PT(Female) • PT(Female) x PF(Male) • PT(Female) x PT(Female) 	

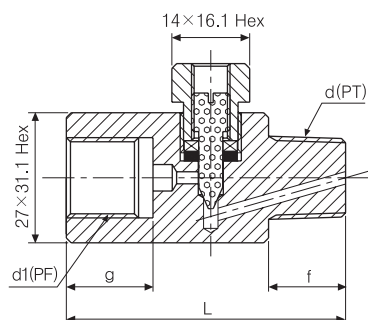
■ Dimensions

(unit:mm)

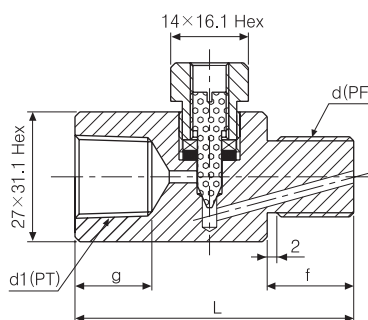


Model	Teflon (d1)	Teflon (d)	g	f	L
SS-DP01 (PF×PF)	PF1/4	PF1/4	16	16	56
	PF1/4	PF3/8	16	18	58
	PF1/4	PF1/2	16	20	60
	PF3/8	PF1/4	18	16	58
	PF3/8	PF3/8	18	18	60
	PF3/8	PF1/2	18	20	62
	PF1/2	PF1/4	20	16	60
	PF1/2	PF3/8	20	18	62
	PF1/2	PF1/2	20	20	64

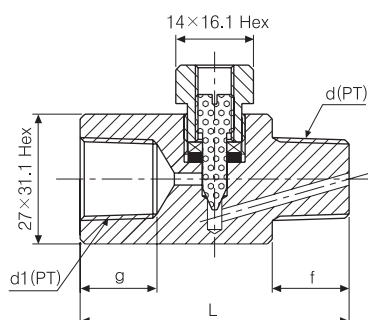
(unit:mm)



Model	Teflon (d1)	Teflon (d)	g	f	L
SS-DP02 (PF×PT)	PF1/4	PT1/4	16	14	54
	PF1/4	PT3/8	16	16	56
	PF1/4	PT1/2	16	18	58
	PF3/8	PT1/4	18	14	56
	PF3/8	PT3/8	18	16	58
	PF3/8	PT1/2	18	18	60
	PF1/2	PT1/4	20	14	58
	PF1/2	PT3/8	20	16	60
	PF1/2	PT1/2	20	18	62



Model	Teflon (d1)	Teflon (d)	g	f	L
SS-DP03 (PT×PF)	PT1/4	PF1/4	14	16	54
	PT1/4	PF3/8	14	18	56
	PT1/4	PF1/2	14	20	58
	PT3/8	PF1/4	16	16	56
	PT3/8	PF3/8	16	18	58
	PT3/8	PF1/2	16	20	60
	PT1/2	PF1/4	18	16	58
	PT1/2	PF3/8	18	18	60
	PT1/2	PF1/2	18	20	62

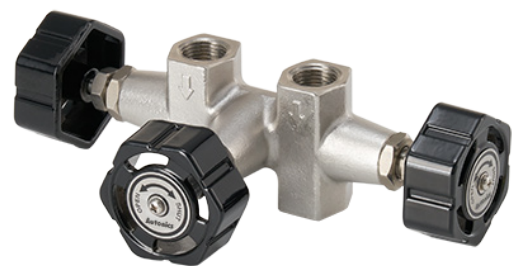


Model	Teflon (d1)	Teflon (d)	g	f	L
SS-DP04 (PT×PT)	PT1/4	PT1/4	14	14	56
	PT1/4	PT3/8	14	16	58
	PT1/4	PT1/2	14	18	60
	PT3/8	PT1/4	16	14	58
	PT3/8	PT3/8	16	16	60
	PT3/8	PT1/2	16	18	62
	PT1/2	PT1/4	18	14	60
	PT1/2	PT3/8	18	16	62
	PT1/2	PT1/2	18	18	64

Manifold Valves

■ Features

- Temporarily shuts off the measuring fluid during maintenance, inspection, repair, replacement of the pressure gauge
- Generally used for low pressure
- Applications
 - Valve, cock valve connection
 - Install pressure gauge on panel
 - Steam line, etc.



■ Ordering Information

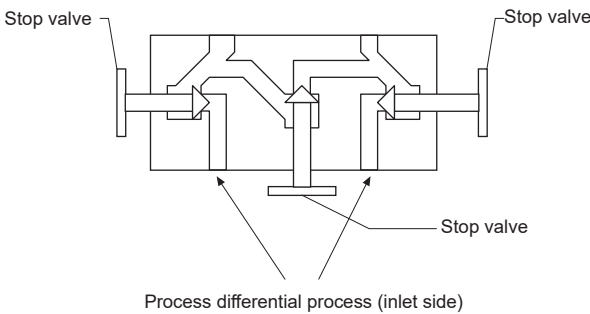
SS-3W	1	0		
			Accessory	0 None
				1 Oval flanges(Bolt&Teflon ring)
			Type	1 Oval
				2 Screw
			Series	SS-3W 3-way Manifold Valves

■ Specifications

Rated pressure		150kgf/cm²
Ambient temperature		-30~150℃
Application		Differential pressure transmitter
Connector		PT 1/2
Material	Flange	St or SUS316
	Bolt	SUS304
	Gasket	Teflon, fluoric rubber

■ Connections

◦ SS-3W Series



■ Dimensions

◦ SS-3W Series

(unit:mm)

