

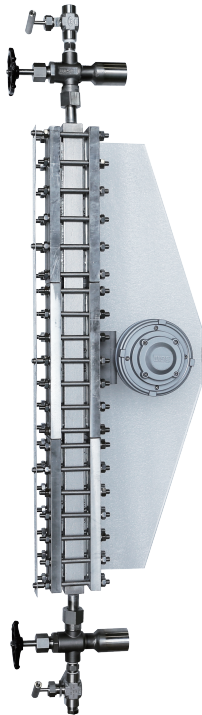
Optional Illuminator type level gauge for L100 and L200

Spec. sheet no. LD01-06

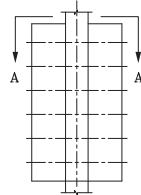


Description

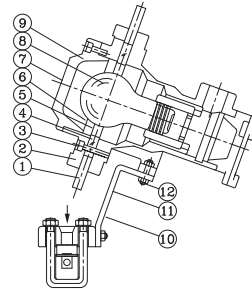
Complete range of size : single and double section WISE explosion-proof illuminator are made in single and double section styles for transparent and reflex gauges. Double section illuminator require only one bulb for complete illumination of two gauge sections.



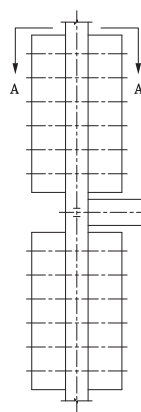
Single Section



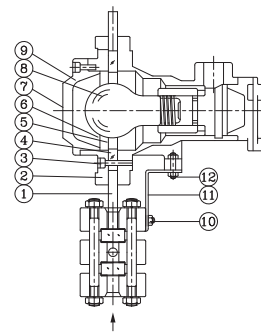
For Reflex Gauge A-A' VIEW



Double Section



For Transparent Gauge A-A' VIEW



Specification

Electricity

Voltage : AC 110 ~ 240 V, 50 Hz, 60 Hz

Bulb light : 30 ~ 100 W

Certificates

KCS Ex d IIC T6 IP65

ATEX II 2G Ex d IIC T6 Gb

IECEx Ex d IIC T6 Gb

No.	Description	Material	Q'ty
1	Reflector	Methacrylate	1
2	Cover	AC 4C	1
3	Bolt	Sus 304	1
4	Glass plate	Glass	3
5	O-ring	NBR	1
6	Gasket	T #1,000	1
7	Cover	AC 4C	1
8	Bulb light		1
9	Light housing	AC 4C	
10	Bolt	SS41	2
11	Holder	SS412	1
12	Bolt nut	SS412	2