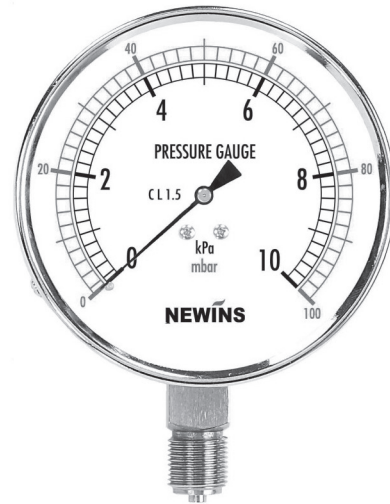


## SUMMARY

NP-305 Series is an instrument specially designed for measuring the low pressure that can't be measured with a bourdon pressure gauge, element uses chamber.

Using the various gas pipe pressure measured or mainly used for the low pressure measurements of the various applications.



Model. NP-305-1

## SPECIFICATIONS

- ▶ **Diameter** : 75,100mm
- ▶ **Accuracy**  
75,100mm :  $\pm 1.5\%$  of Full Scale
- ▶ **Scale Range** :  
75,100mm : -5 ~ -50 kPa,  $\pm 5$  kPa ~  $\pm 50$  kPa  
5 kPa ~ 50 kPa
- ▶ **Working Pressure** :  
Static Pressure : 75% of Full Scale  
Fluctuating Pressure : 60% of Full Scale
- ▶ **Working Temperature**  
Ambient : -20~65°C  
Fluid : -20~80°C
- ▶ **Process connection** :  
Brass(C3604be), STS 304
- ▶ **Element**  
Phosphor Bronze
- ▶ **Case, Cover**  
DS-1051,1052 Steel(SPCD)  
Cr-Plating  
DS-1054,1054 STS 304
- ▶ **Window**  
General Glass
- ▶ **Movement**  
STS 304
- ▶ **Dial**  
Aluminum  
White Coating
- ▶ **Pointer**  
Aluminum  
Black Coating
- ▶ **Type** :  
NP-305-1 (Rimless Type)  
NP-305-2 (Surface Type)  
NP-305-3 (Flush Mounting Type)  
NP-305-4 (Panel attachment Type)
- ▶ **Process connection** :  
75mm : 1/4", 3/8"PT & NPT, PF  
100mm : 1/4", 3/8"PT & NPT, PF
- ▶ **Option** :  
Accessories

A

B

C

D

E

F

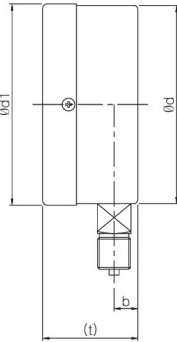
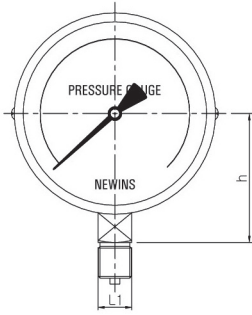
G

H

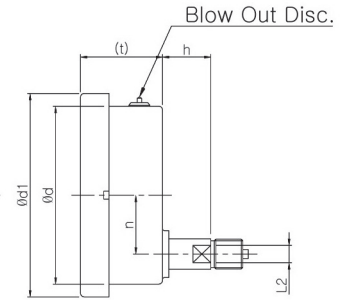
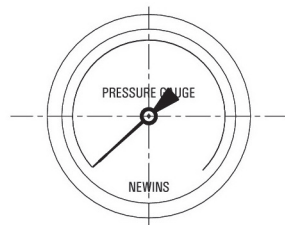
I

J

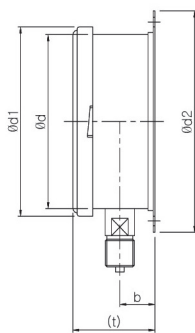
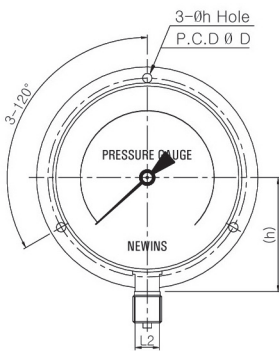
DIMENSION



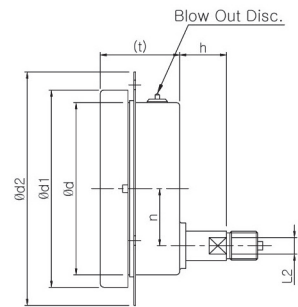
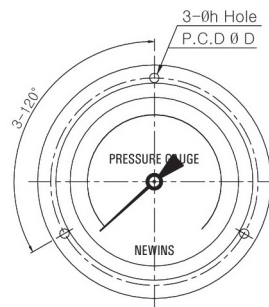
Model. NP-305-1(A)



Model. NP-305-3(D)



Model. NP-305-2(B)



Model. NP-305-4(BD)

STANDARD SPECIFICATIONS

Dimensions (mm)

Dial	Model No.	$\varnothing d$	$\varnothing d1$	$\varnothing d2$	b	n	t	L1	L2	h	$\varnothing h$	$\varnothing D$
75	NP-305-1(A)/2(B)	76.5	78	100	13	-	(50)	17	-	(50)	4.5	88
	NP-305-3(D)/4(BD)			107	-	22	(40)	-	14	(19)		97
100	NP-305-1(A)	100	101.5	-	12	-	(48)	17	-	(65)	-	-
	NP-305-2(B)	101	110	128	20	-	(47)	-	14	(66)	5.5	128
	NP-305-3(D)/4(BD)	100	114	135	-	33	(40)	-	17	(27)		135